

Materials & Finishes

Materials

Coordinated Laminates

Vinyl Edge Banding

Polyurethane Molded Edge
Color Selection

Powder Coat Colors

Woodgrain Laminates

End Cap Accent

Privacy Panel Fabrics

Seating Fabrics

INNOVANT

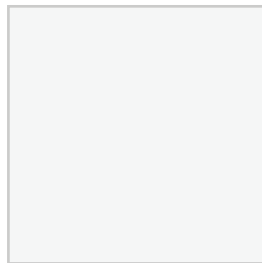
Considerations	<p>Many factors can affect the materials specified with regard to color, texture, sheen, adhesion, etcetera that are outside of Innovant's control. These include but are not limited to: age, internal and external environmental conditions, wood species, bundles and lots, manufacture source, lighting conditions, usage, new standards introduction over time, etcetera. Color and texture deviations are minimized by Innovant at every opportunity, but these variances are a natural characteristic of even the best source materials available today.</p>
Sustainability	<p>Innovant was founded with a mission to minimize our impact on the environment and to ensure our products are environmentally sustainable. Conservation is a primary component of Innovant's core philosophy; It has always been part of how we work, and how we think.</p> <p>With years of LEED project experience our in house LEED APs, engineering, manufacturing and sales teams can help you determine an optimal design in accordance with the U.S. Green Building Council's principles.</p> <p>Innovant products are ideal for project teams seeking LEED certification as well as customers who prioritize environmentally sustainable furniture specification. All of our standard products already conform to a variety of eco-requirements and many items can be further configured to maximize LEED points.</p>
Wood Laminates	<p>USGBC LEED Credits may be obtained through use of Wilsonart Laminate in these areas:</p> <ul style="list-style-type: none">MR 4 Recycled ContentMR 5 Regional MaterialsMR 6 Rapidly Renewable MaterialsMR 7 Certified Wood <p>IEQ 4.4 Low-Emitting Materials - Composite Wood and Agrifiber Products</p> <p>IEQ 4.5 Low-Emitting Materials - Systems Furniture and Seating</p>
Panel Fabrics	<p>CO2 emissions from 100% of the electricity used by the manufacturer to produce this product have been measured and offset in accordance with the Carbon Neutral Protocol.</p> <p>Contents: 35% post-consumer recycled polyester 65% pre-consumer recycled polyester</p>

LAMINATES

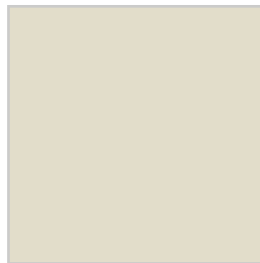
Coordinated Standard Laminates (LA)



Designer White
154



Smoky White
327



Pumice
258



Putty
360



Platinum
258



Neutral Gray
312



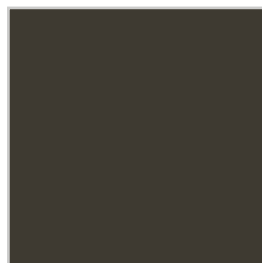
North Sea
190



Gunmetal
320



Storm
212



Graphite
237



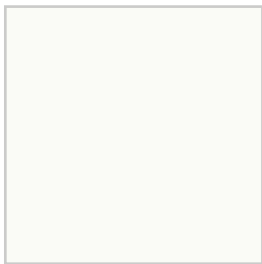
Charcoal
333



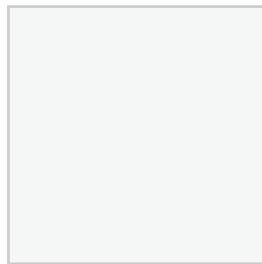
Black
195

EDGING

Vinyl Edge Banding (VB)



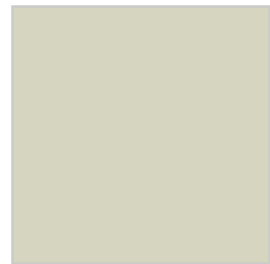
Designer White
WD



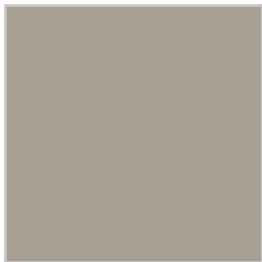
Smoky White
WS



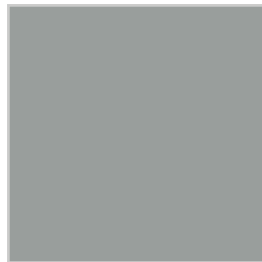
Pumice
PC



Putty
PY



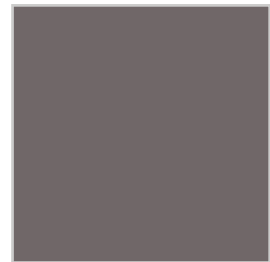
Platinum
PM



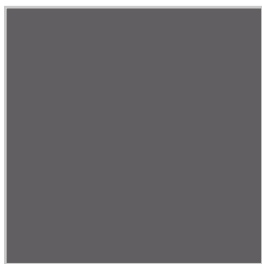
Neutral Gray
GG



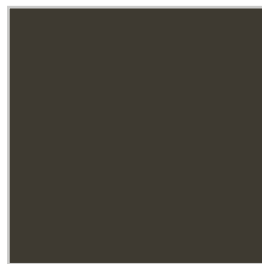
North Sea
GN



Gunmetal
GM



Storm
GS



Graphite
GR



Charcoal
GC



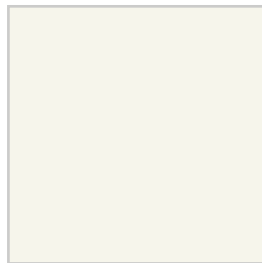
Black
BK

MOLDED EDGING

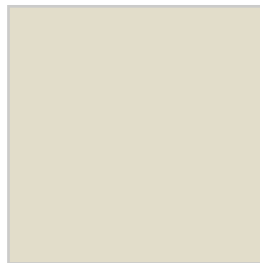
Polyurethane Molded Edge Color Selection (PY)



Designer White
WD



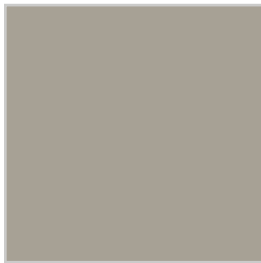
Smoky White
WS



Pumice
PC



Putty
PY



Platinum
PM



Neutral Gray
GG



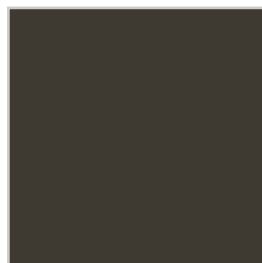
North Sea
GN



Gunmetal
GM



Storm
GS



Graphite
GR



Charcoal
GC



Black
BK

POWDER COATS

Powder Coat Selections (PC)



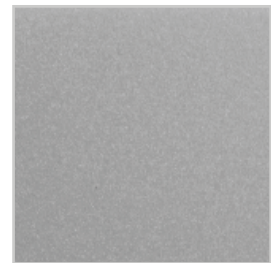
Arctic White
WAR



Champagne
CHG



Pewter
PEW



Silver
SLV



Umber
UMB



Charcoal
CHR



Black
BKM

WOODGRAIN LAMINATES

Also Available in Wood Plain Slice Veneer & Recut Veneer (WV & RV)



Amber Cherry
CHA



Natural Oak
OAN



Medium Walnut
WAM



Dark Mahogany
MHD



Natural Maple
MPN



Honey Maple
MPH



Dark Cherry
CHD



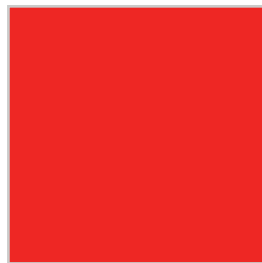
Light Mahogany
MHL

END CAP ACCENT

FORm_office and Conference Lower End Cap Color (EC)



Traffic Red
RT



Traffic Orange
OT



Signal Yellow
YS



Pale Green
GP



Pale Blue
BP

PRIVACY PANEL FABRIC

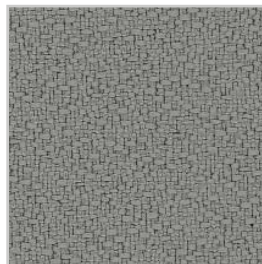
Anchorage Collection (AN)



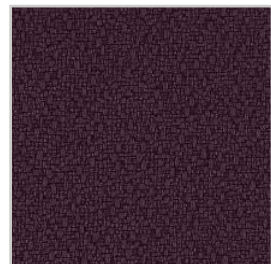
Amber 129



Angora 035



Asteroid 053



Aubergine 036



Birch 129



Cobalt 045



Coffee Bean 083



Cumin 050



Vanilla 130



Eucalyptus 047



Fossil 093



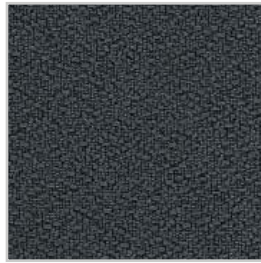
Geranium 084



Magenta 692



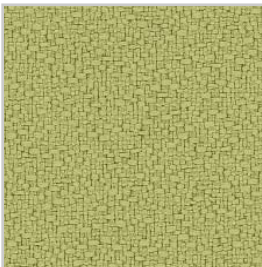
Goose 049



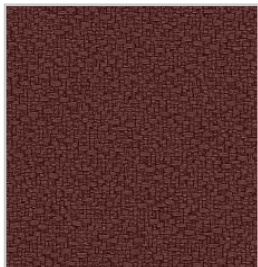
Graphite 079



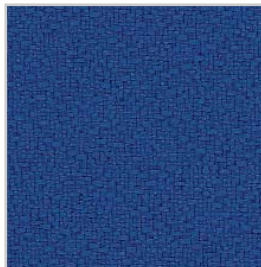
Green Apple 087



Green Olive 048



Henna 052



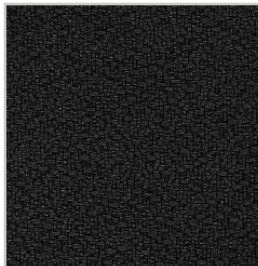
Lapis 094



Midnight 025



Mulberry 044



Onyx 016



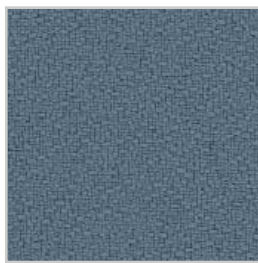
Sunshine 082



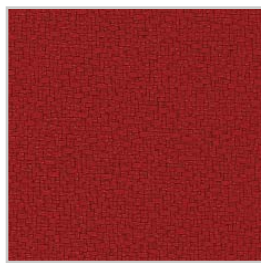
Straw 034



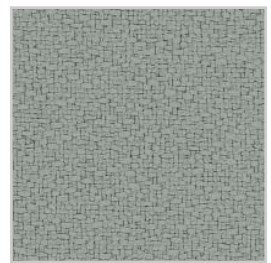
Pumpkin 021



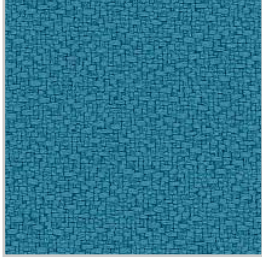
Quarry Blue 026



Red Delicious 014



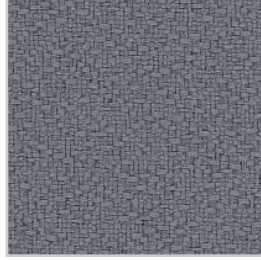
Slate 017



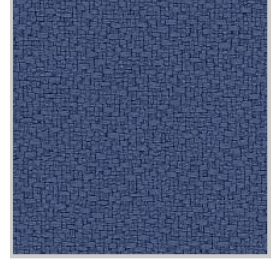
Waterfall 691



Willow 028



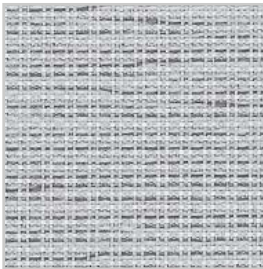
Wolf 027



Thistle 085

PRIVACY PANEL FABRIC

Tempest Collection (TP)



Frost 031



Full Stream 012



Dragonfly 020



Gold Rush 041



Undercurrent 021



Sandstorm 040



Ginger 042



Silk 045



Zebra 015



Starlight 023



Tumbleweed 030

SEAT CUSHION FABRIC

New Hempstead (NH)



Aubergine 419



Golden 415



Amber Glow 416



Fire 406



Black 333



Grey 395



Jodhpurs 420



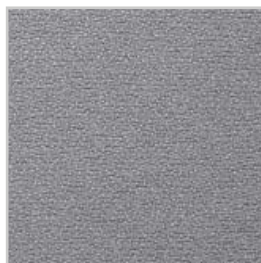
Lake 423



Napa 422



Navy 369



Nickel 361



Steel 366

INNOVANT

innovant.com